

Redistricting

Board Briefing
October 19, 2021



PERSONAL | PASSIONATE | PROGRESSIVE



Agenda

1. Review Highlights of 10/5/21 Briefing
2. Legal Advice
3. County Update
4. School District Comparisons
5. School District Considerations
6. Timeline
7. Comments and Questions



Review

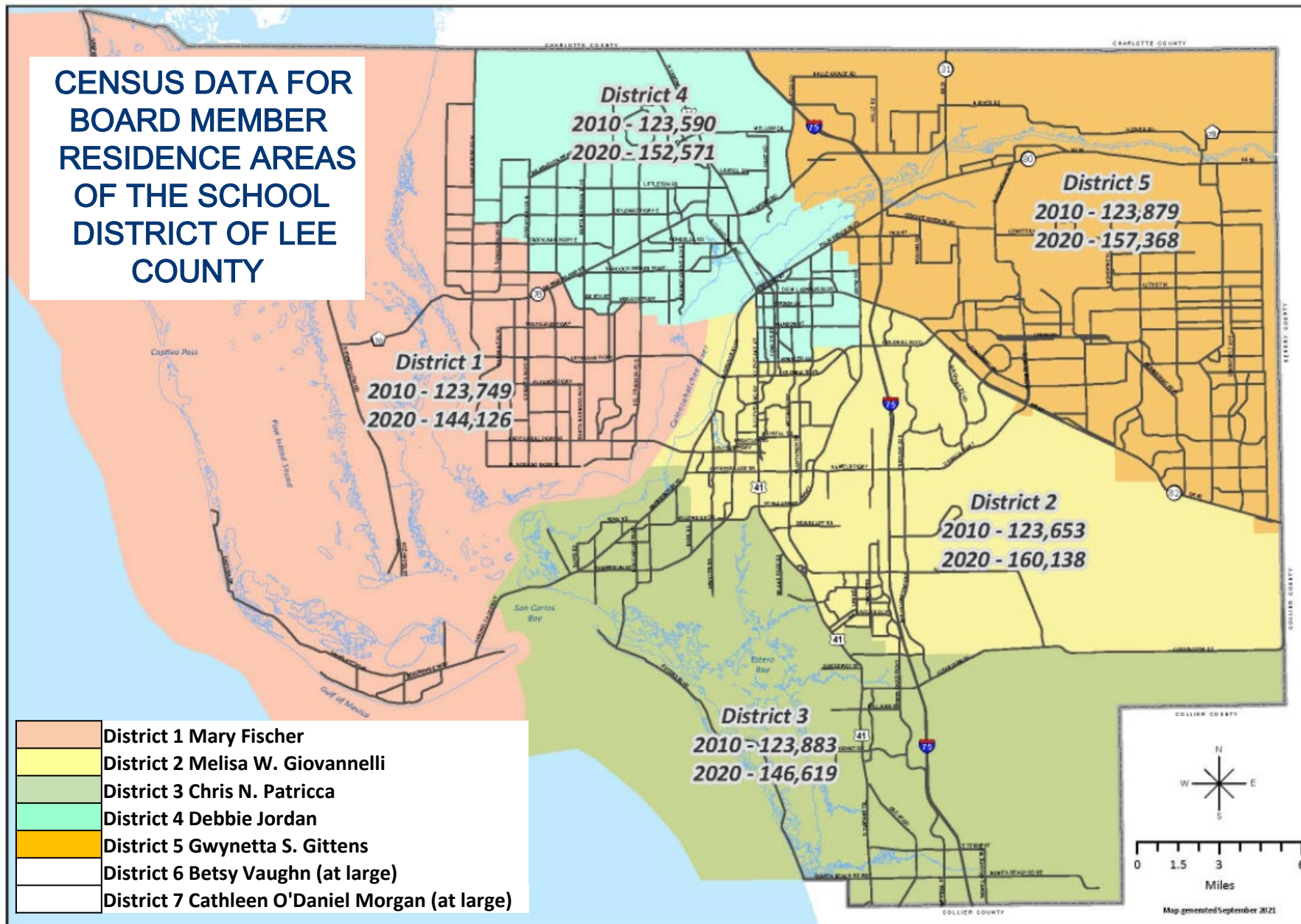


Redistricting Overview

- 2021: Readjust population between School Board districts (based on 2020 Census data) by redrawing district lines
- No district may include substantially more constituents than others
- Target: @ 152,000 constituents/district



CENSUS DATA FOR BOARD MEMBER RESIDENCE AREAS OF THE SCHOOL DISTRICT OF LEE COUNTY



- Map generated by County in September
- Compares 2010 Census info to 2020
- Shows shifts in demographics over last 10 years

WHAT THE CENSUS DATA IS TELLING US



Population by Commission District						
Target 152,164		District 1	District 2	District 3	District 4	District 5
Current District	Population	144,126	160,138	146,619	152,571	157,368
	Difference from Target	-8,038	7,974	-5,545	407	5,204
	% Deviation from Target	-5.28%	5.24%	-3.64%	0.27%	3.42%

Source: U.S. Census Bureau, Census 2020

- The indicators above show that creating new maps is necessary
 - Districts 1, 2, 3, and 5 deviations are all beyond +/- 2.5%
- F.S. 124.01 [3]*



District -wide Census Information for Current Boundaries

		2020 Population	Percent of Total 2020 Population	2010 Population	2010- 2020 Percent Change
Race	Total	760,822	100%	618,754	23.0%
	White Alone	530,637	69.7%	513,496	3.3%
	Black Alone	58,916	7.7%	51,069	15.4%
	American Indian & Alaska Native Alone	3,828	0.5%	2,193	74.6%
	Asian Alone	13,090	1.7%	8,461	54.7%
	Native Hawaiian or Other Pacific Islander Alone	312	0.0%	380	-17.9%
	Some Other Race Alone	56,861	7.5%	30,290	87.7%
	2 or More Races	96,178	12.8%	12,865	655.4%
Ethnicity	Hispanic or Latino	173,161	22.8%	113,308	52.8%
	Not Hispanic or Latino	587,661	77.2%	505,446	16.3%

<https://www.leegov.com/countymanager/redistricting>

Source: U.S. Census Bureau, Census 2020 and 2010 Redistricting Data (Public Law 94-171).



Legal Advice



What standards must a redistricting process apply?

- **Equal (almost) in population.** Individual districts should be as nearly equal in population as is possible or practicable. “Population” means residents, not registered voters. “Nearly equal” means that the population of individual districts should be as close to the average size district (i.e. ideal size) as is possible.
- **Doesn’t dilute minority voting strength.** If there is a location where a significant number of minority residents reside, their ability to vote as a block should not be diluted by either dividing that population into two or more districts (termed “cracking”) or, if there is a significant minority population in two districts, moving that population into a single district (termed “packing”).
- **Contiguous.** All parts of the district are physically adjacent.
- **Follow the Voting Rights Act and comply with the Equal Protection Clause.**



What traditional factors may a redistricting process apply?

- **Compact.** Districts should be relatively compact. Unusual, “bizarre” or serpentine district shapes that are created without furthering a valid underlying public policy purpose should be avoided.
- **Significant natural and man-made boundaries.** Where possible, district boundaries should follow easily recognized or understood boundaries, such as major roads, waterbodies, or parklands.
- **Preserves the core of existing district boundaries.** The boundaries of the new districts may retain the core of their existing boundaries to provide continuity of representation.
- **Avoids splitting communities of interest.** District boundaries should avoid splitting communities that have similar interests (e.g. neighborhoods or cities) where possible.



Voting Rights of 1965

- Voting Rights Act of 1965 - to remedy the inequality of opportunity provided to racial and ethnic minorities to participate in elections.
- Section 2 to The Voting Rights Act - prohibits any state from imposing a voting qualification or prerequisite to voting or standard practice to deny the right to vote based on color or race.



Redistricting Legal Question

- Is the Board permitted to adopt one of the County's maps, being that the Board is comprised of 5 Board Members from Single Member Districts and 2 At Large Members?

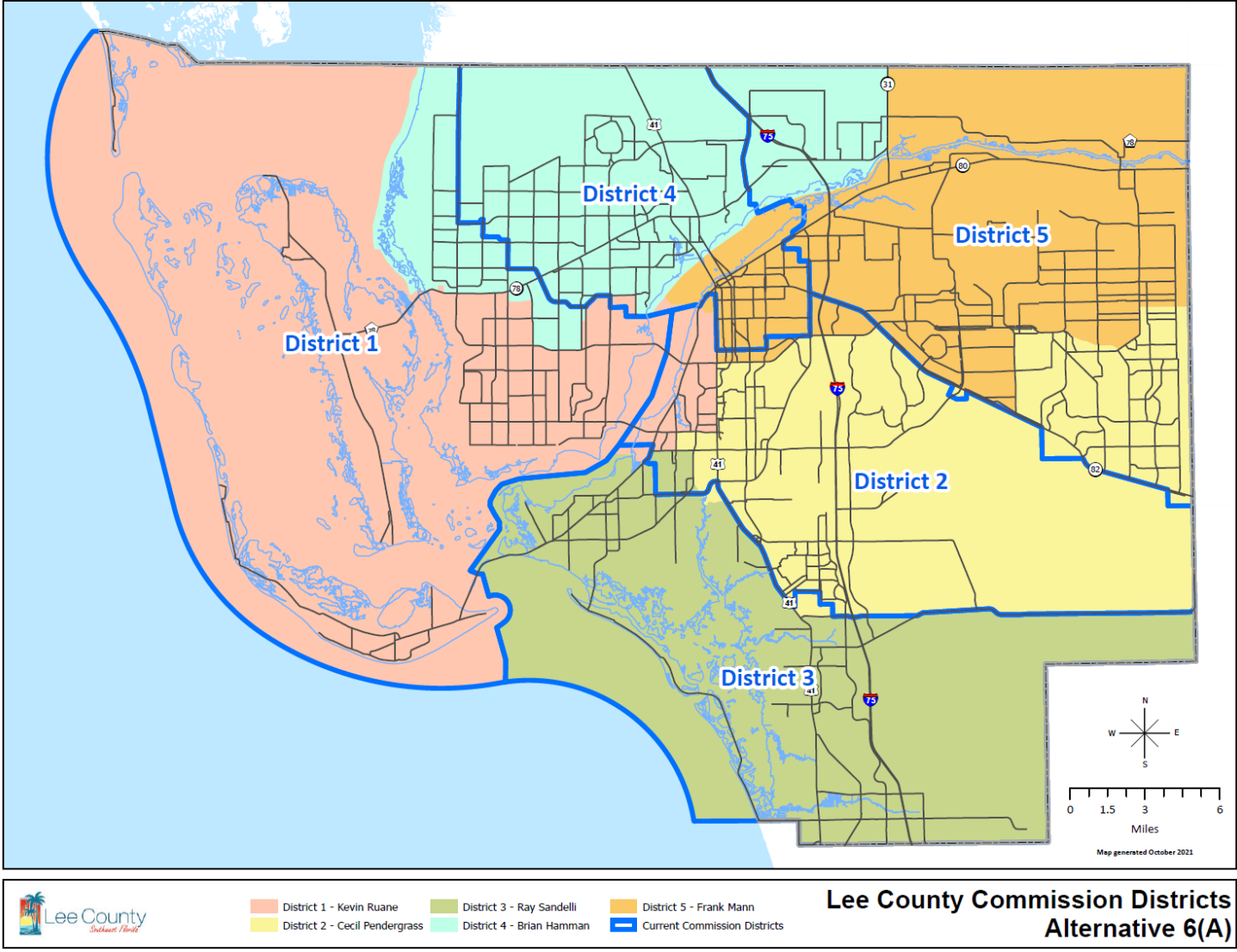


County Update

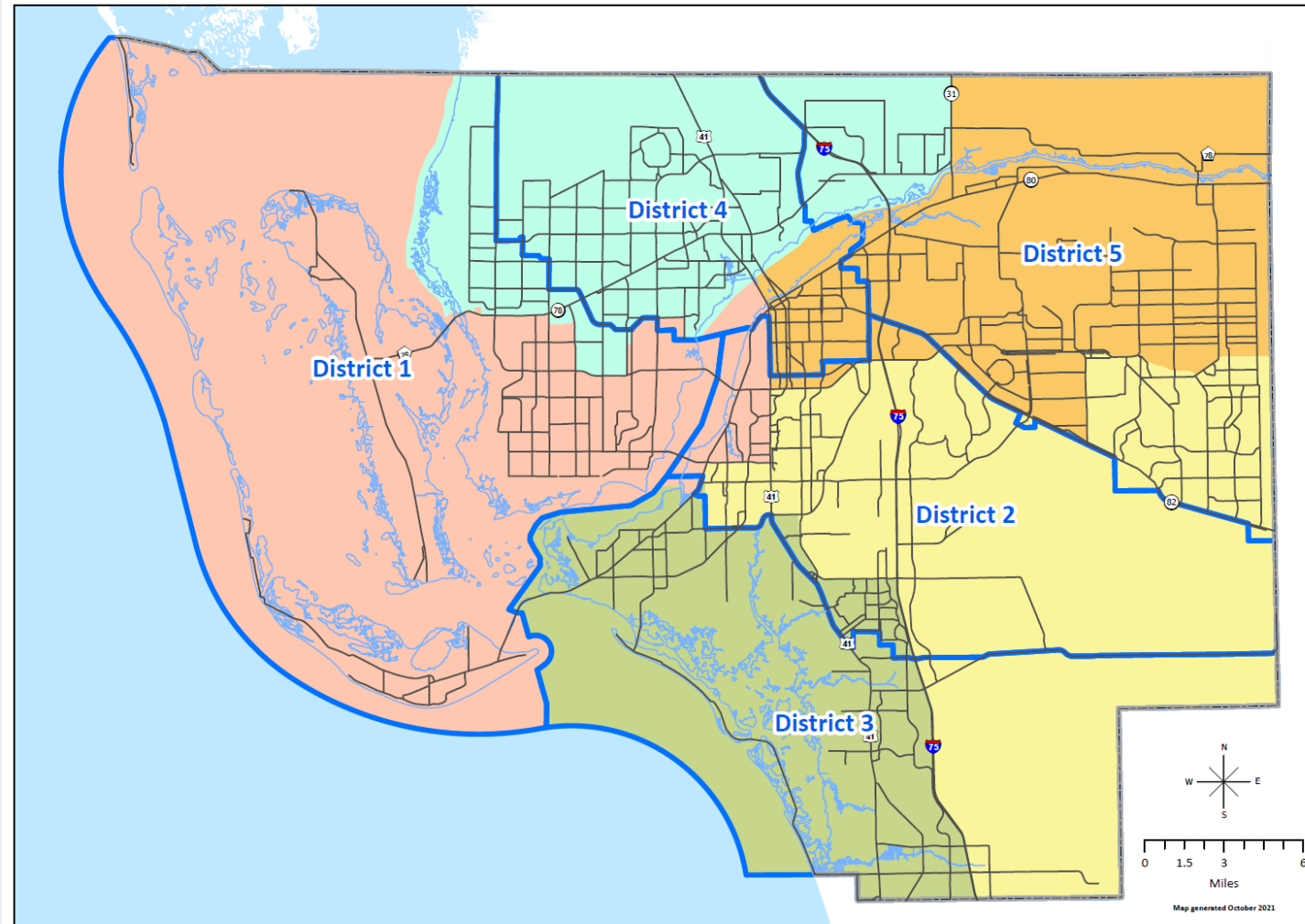


- Following Oct. 5th Public Hearing
 - Agreed to the development of Map #6
- November Public Hearings
 - 11/2/21
 - 11/16/21

County Map #6(A)



County Map #6(B)



District 1 - Kevin Ruane
District 2 - Cecil Pendergrass
District 3 - Ray Sandelli
District 4 - Brian Hamman
District 5 - Frank Mann
Current Commission Districts

**Lee County Commission Districts
Alternative 6(B)**



School District Comparisons



- What are similar school districts doing relative to Redistricting?

School District Comparisons by Size (over 600,00)



County	2020 Population Estimates from BEBR	Board District Type	Redistricting Plan
Miami-Dade	2,832,794	Single Member	One draft map presented 9.22.21, Nov. adjustments to map, Nov-Dec. Final Adoption of map.
Broward	1,932,212	Single Member & At-Large	Creating one map with input from all stakeholders on Nov. 1, 2021.
Hillsborough	1,478,759	Single Member & At-Large	Waiting until 2023.
Palm Beach	1,466,494	At-Large w/single district residency	Considering a scenario developed with guidance from outside counsel.
Orange	1,415,260	Single Member & At-Large	Will review "reappointment" maps Dec. 2021 to determine the map for adoption; does not follow County Commission due to six Commissioner districts and seven School Board districts.
Pinellas	984,054	Single Member & At-Large	School Board Attorney will be addressing this on Tuesday. Just starting their process.
Lee	750,493	Single Member & At-Large	Currently in the beginning stages for redistricting.
Brevard	606,671	At-large	Sept 21, 2021. One Board Member asked about bringing forward a couple of proposals to align Board member districts with those of the County Commission. The rest of the Board was not in favor.



School District Comparisons by Size (under 600,00)

County	2020 Population Estimates from BEBR	Board District Type	Redistricting Plan
Volusia	551,588	Single Member	Waiting to assess the County's maps before determining whether to continue using. 3 meetings with the county and the district. Joint meetings. County presented A-F. School has G-L. K and L created after additional planning with the Board Members. More information following next Monday's meeting.
Pasco	542,638	Single Member elected at-large	Waiting to assess the County's maps before determining whether to continue using the same boundaries or making changes.
Sarasota	438,816	At-Large	Currently in beginning stages for redistricting.
Marion	368,135	At-Large	In the beginning stages.
Lake	366,742	Single Member	Wrapping up the process. Board Members prefer the staff prepared draft map. Final version presented in Nov. Adopting in Dec.
Alachua	271,588	At-Large w/single district residency	School Board will select between two maps after one public input opportunity.
St Johns	261,900	Single Member	The St. Johns County School Board and Board of County Commissioners will work together to share the same boundaries for each of their five districts.
Charlotte	187,904	Single Member	In the initial stages. Historically go with County Commissioners.
Sumter	141,422	At-Large w/ single district residency	Working through this process now. Will be done this year. Historically did their own maps. Most likely will do their own map again.
Flagler	114,173	At-Large	Past practice was to follow the county. School Board presented with 2 options for decision.
Washington	25,334	Single Member	Board is considering all options at this time.



School Board Considerations

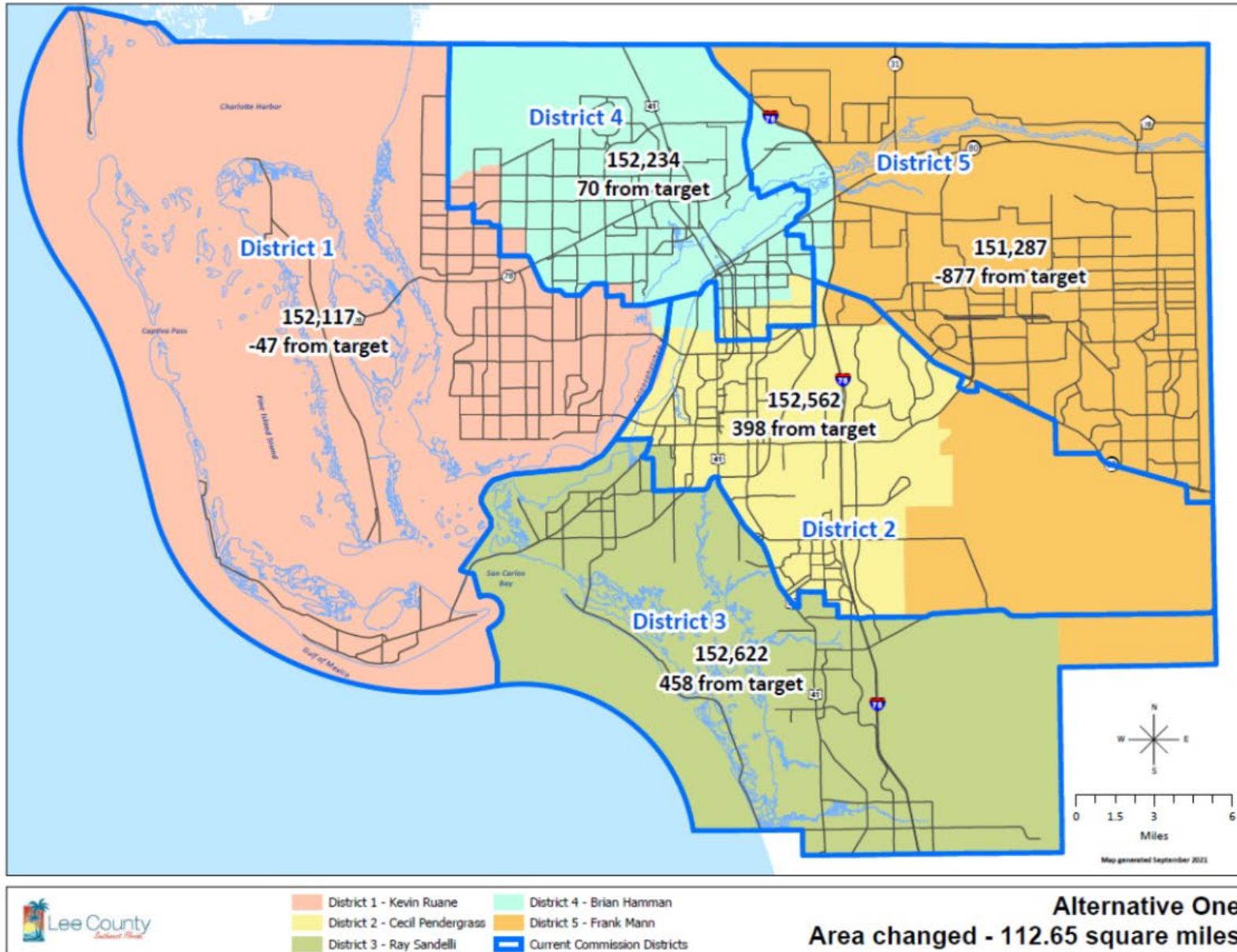


Options

- ☐ Adopt the County's Map
- ☐ Utilize one of the County Maps
- ☐ School Board Creates Its Own Map

Public Hearing

Redistricting October 5, 2021



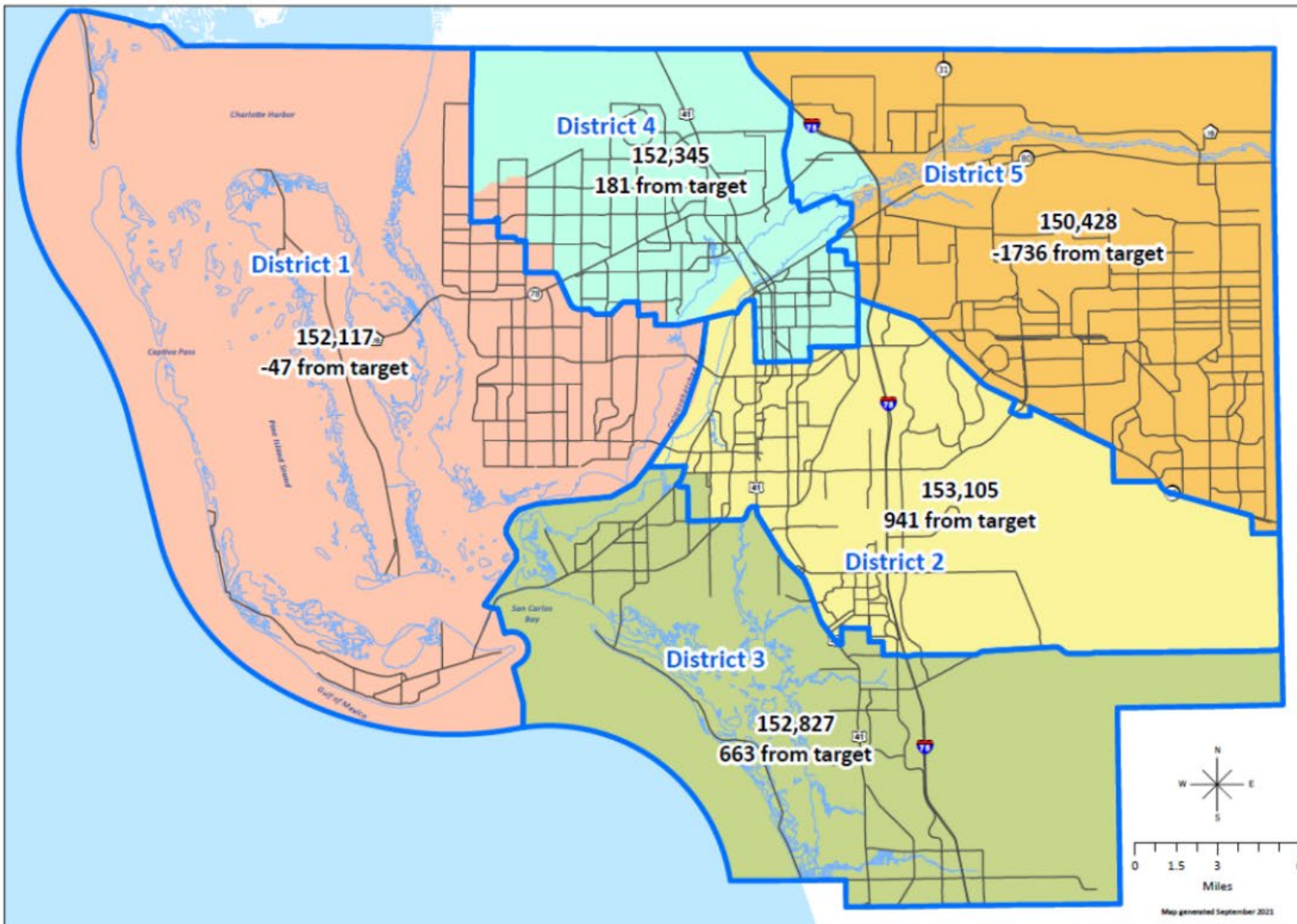


Map #1

Strengths	Challenges

Public Hearing

Redistricting October 5, 2021



- District 1 - Kevin Ruane
- District 2 - Cecil Pendergrass
- District 3 - Ray Sandelli
- District 4 - Brian Hamman
- District 5 - Frank Mann
- Current Commission Districts

Alternative Two
Area changed - 14.63 square miles

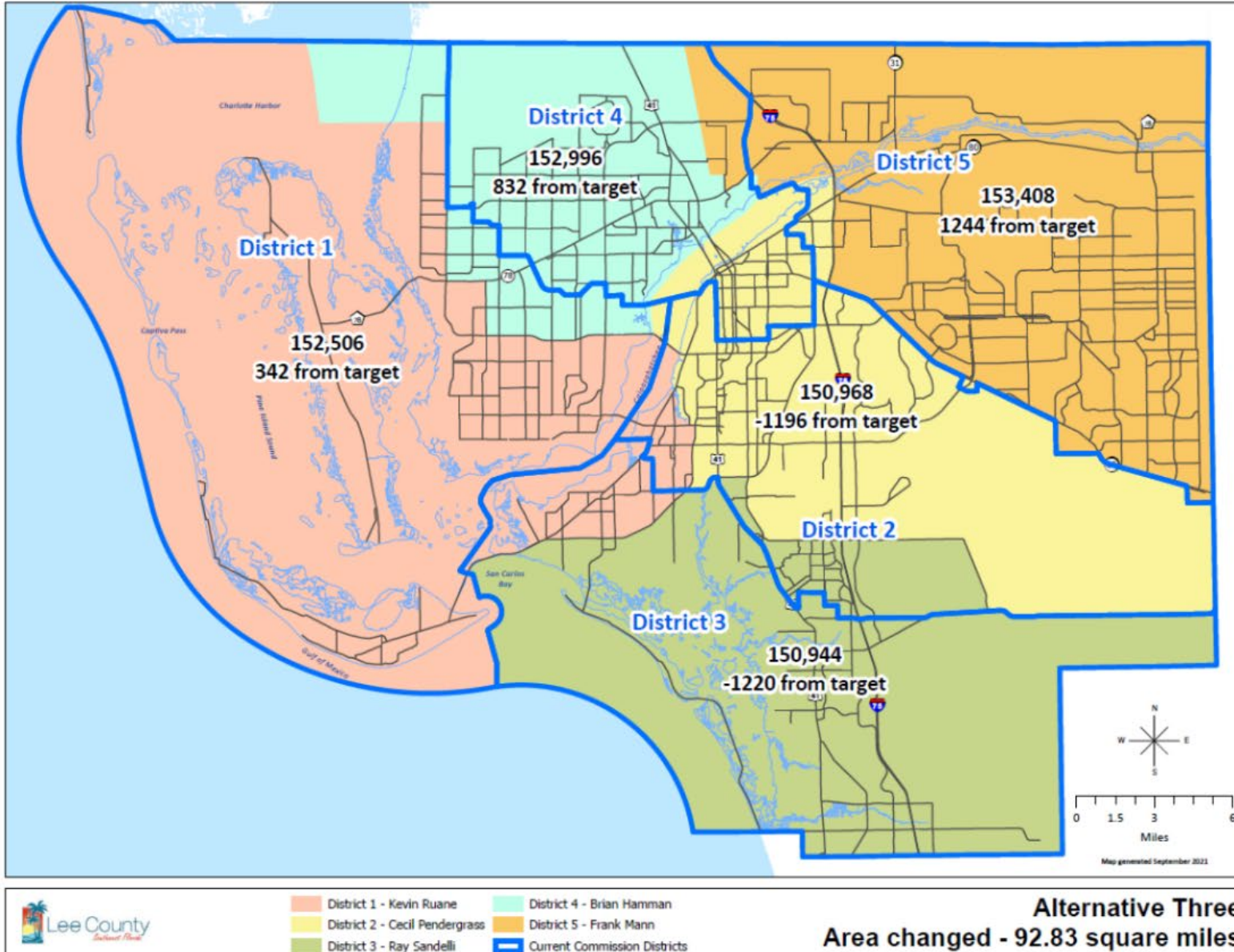


Map #2

Strengths	Challenges

Public Hearing

Redistricting October 5, 2021



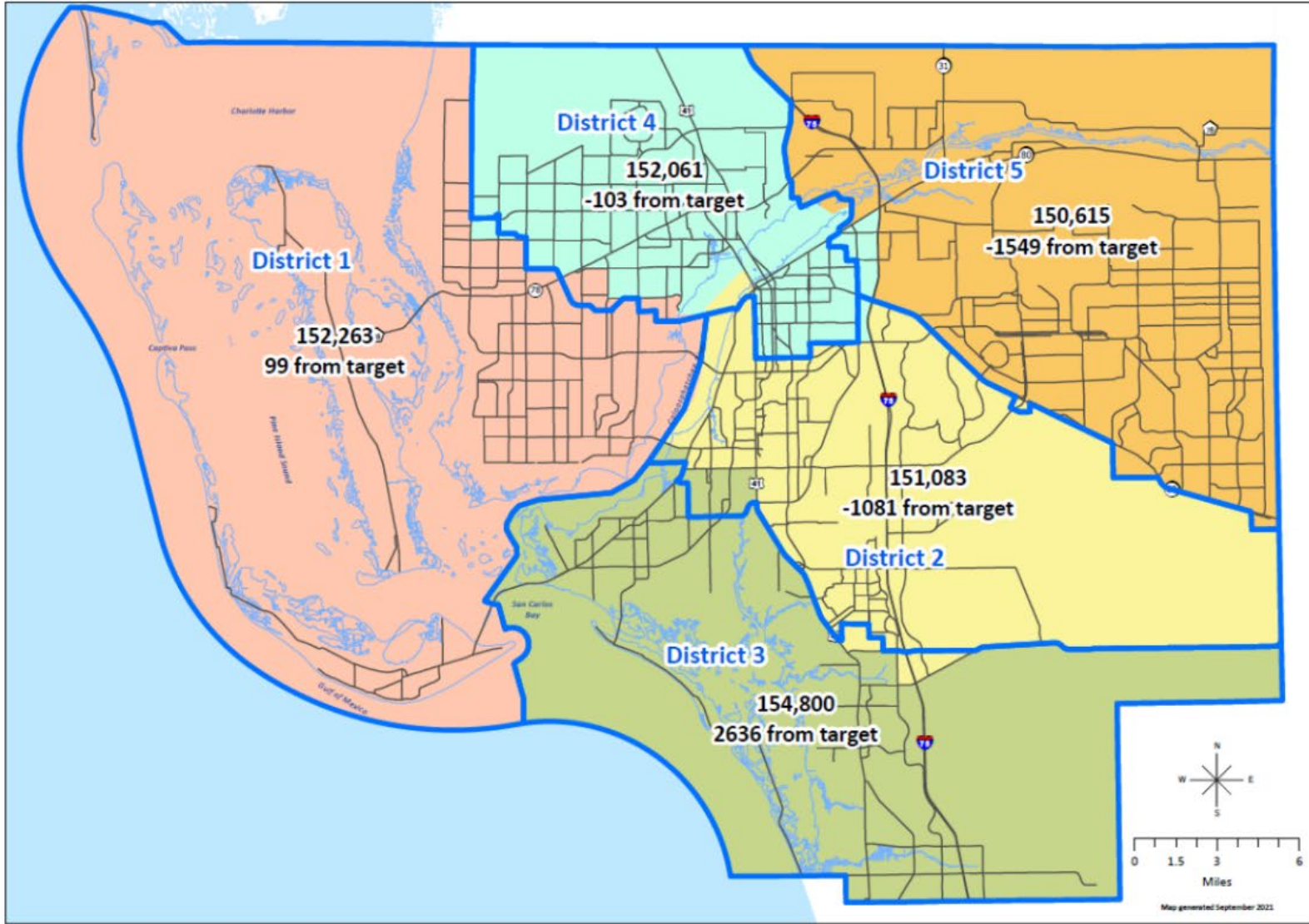


Map #3

Strengths	Challenges

Public Hearing

Redistricting October 5, 2021



- District 1 - Kevin Ruane
- District 2 - Cecil Pendergrass
- District 3 - Ray Sandelli
- District 4 - Brian Hamman
- District 5 - Frank Mann
- Current Commission Districts

Alternative Four
Area changed - 16.18 square miles

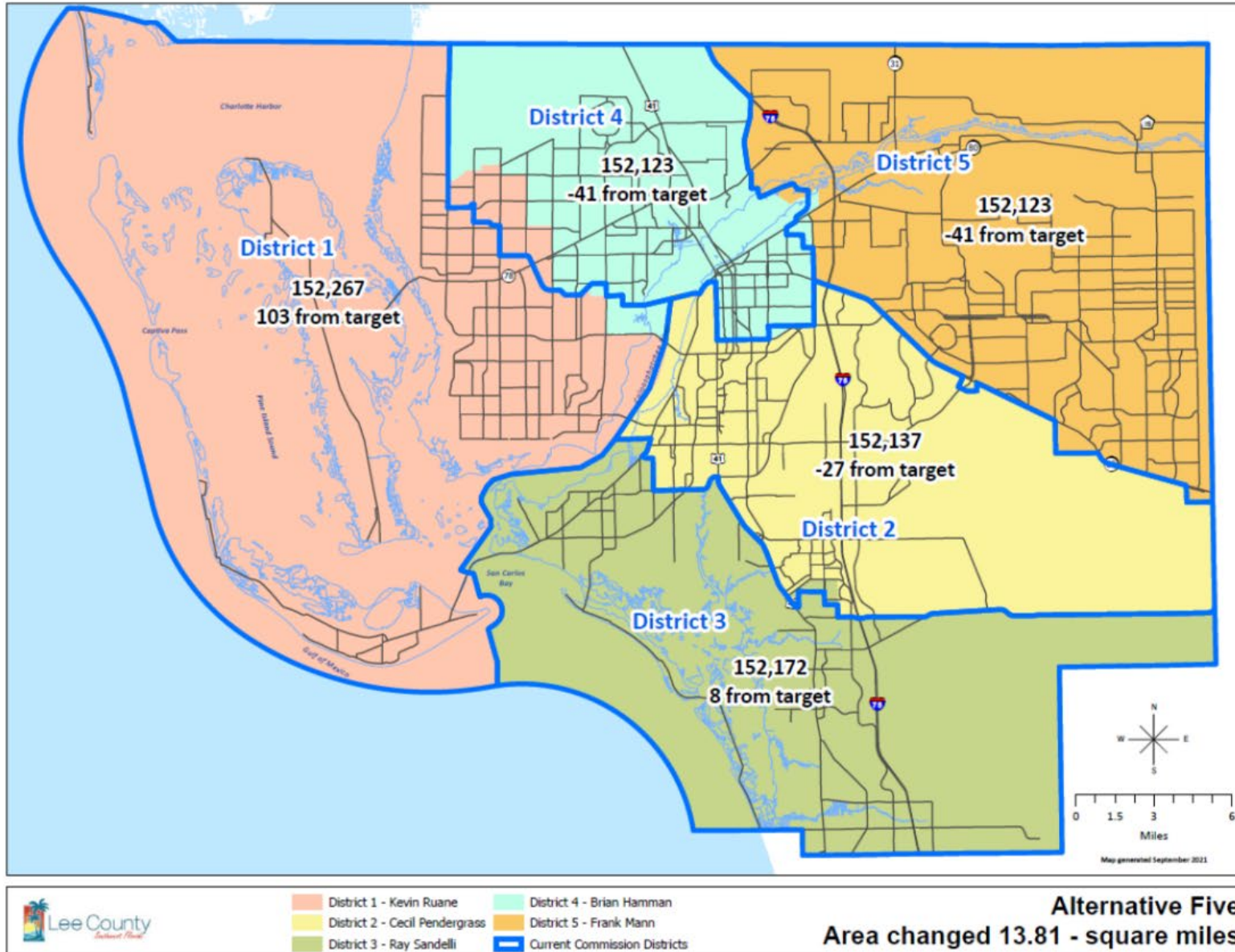


Map #4

Strengths	Challenges

Public Hearing

Redistricting October 5, 2021



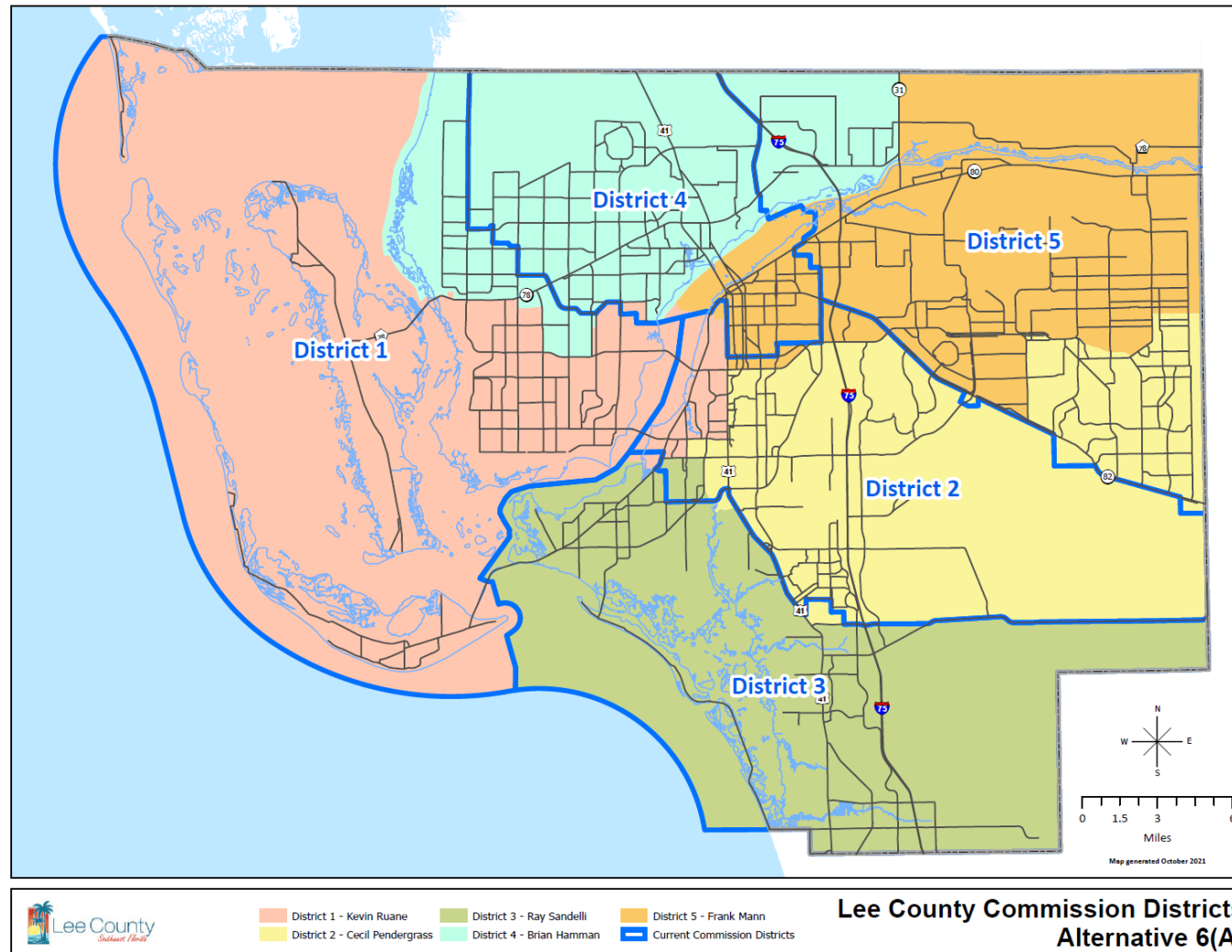


Map #5

Strengths	Challenges



Map #6(A)



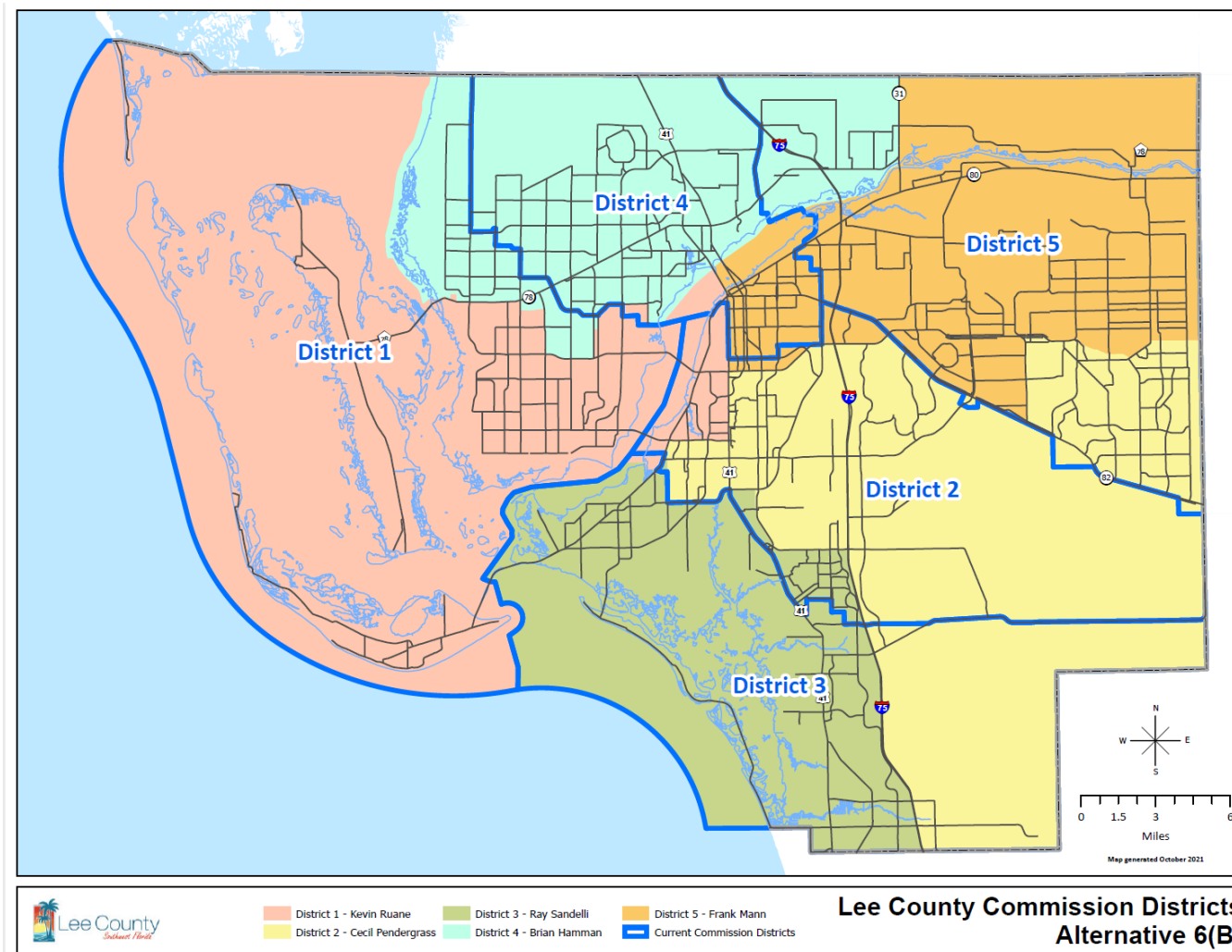


Map #6(A)

Strengths	Challenges



Map #6(B)





Map #6(B)

Strengths	Challenges



Review

School Board Considerations



Option 1: Adopt the County's Choice



Option 2: Utilize one of County's Maps



Option 3: Board Creates Its Own Map



Timeline

Timeline



Month	LCSD - Go with County	LCSD- Create Own Map
September	<ul style="list-style-type: none"> County released the data and map to prove the need to redistrict, based on 2020 U.S. Census Data (Phase I) County initiated Phase II - the process of starting redistricting scenarios 	<ul style="list-style-type: none"> County released the data and map to prove the need to redistrict, based on 2020 U.S. Census Data (Phase I) County initiated Phase II - the process of starting redistricting scenarios
October 5 th October 19 th	<ul style="list-style-type: none"> Board Briefing #1 to discuss 2020 Census Data and need to redistrict Board Briefing #2 to discuss Lee County Maps 	<ul style="list-style-type: none"> Board Briefing #1 to discuss 2020 Census Data and need to redistrict Board Briefing #2 to discuss Lee County Maps
November 2nd *November 3rd *November 16th	<ul style="list-style-type: none"> Community Group Presentations at Board Action Meeting Board Briefing #3 -Consensus on Map Option Tentative Board Briefing #4- Consensus on Map Option 	<ul style="list-style-type: none"> Community Group Presentations at Board Action Meeting Board Briefing #3 -Consensus on Map Option
*November 30th		<ul style="list-style-type: none"> Tentative- Special Board Meeting to Review LCSD Map
December 7th	<ul style="list-style-type: none"> Public Hearing & Adopt map in Board Action Meeting 	
*December 14th		<ul style="list-style-type: none"> Tentative- Public Hearing & Special Board Meeting to Adopt LCSD Map

Comments and Questions

- What questions do you have?
- What additional information do you need?



PERSONAL | PASSIONATE | PROGRESSIVE