

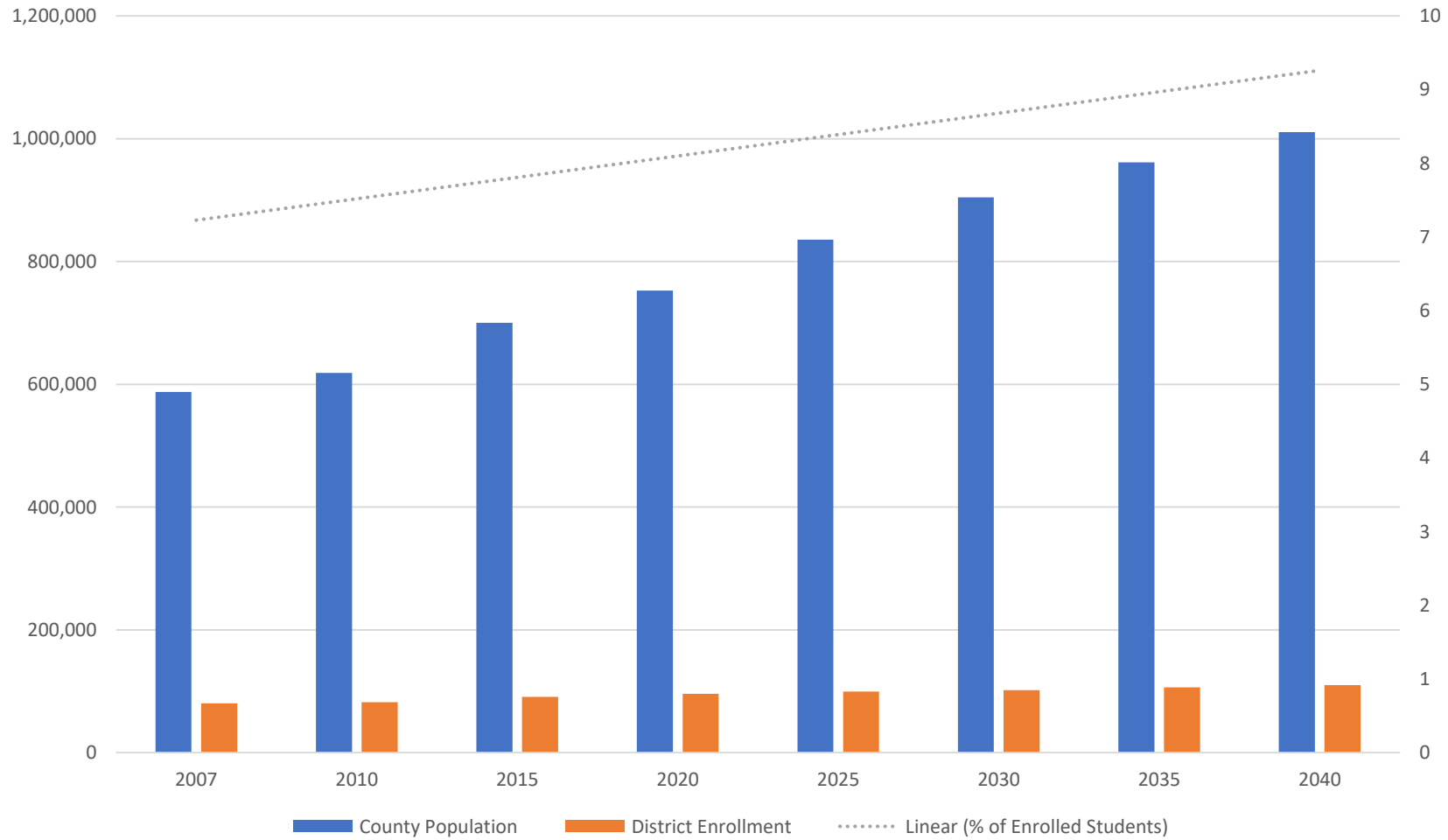
Capital Improvement Plan & Proximity Plan

Planning Growth and School Capacity



PERSONAL | **PASSIONATE** | **PROGRESSIVE**

Figure 1: Correlation of County Population & District Enrollment



Source: US Census, BEBR

County Demographics

Table 1: Lee County Demographic Variety

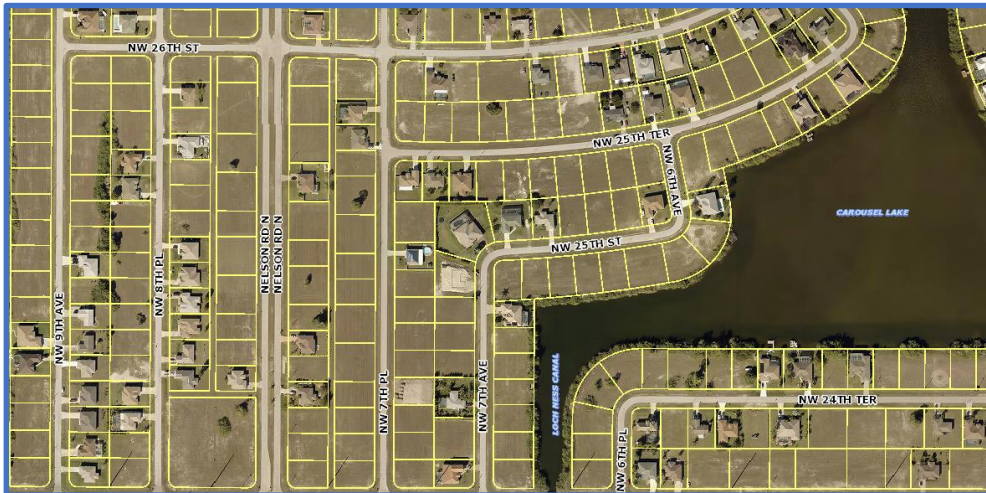
	Lee County	City of Fort Myers	Town of Fort Myers Beach	City of Bonita Springs	Village of Estero	City of Cape Coral	City of Sanibel
% of Pop. 5-18 years	13	13.8	2.2	9.9	6.0	14.1	6.4
% of Pop. 65 and over	28.6	20.8	55.6	39.7	46.7	22.8	54.2
Persons per Household	2.61	2.49	1.93	2.44	2.19	2.74	1.96

Source: US Census

Vacant Residential in Pre-Platted Areas

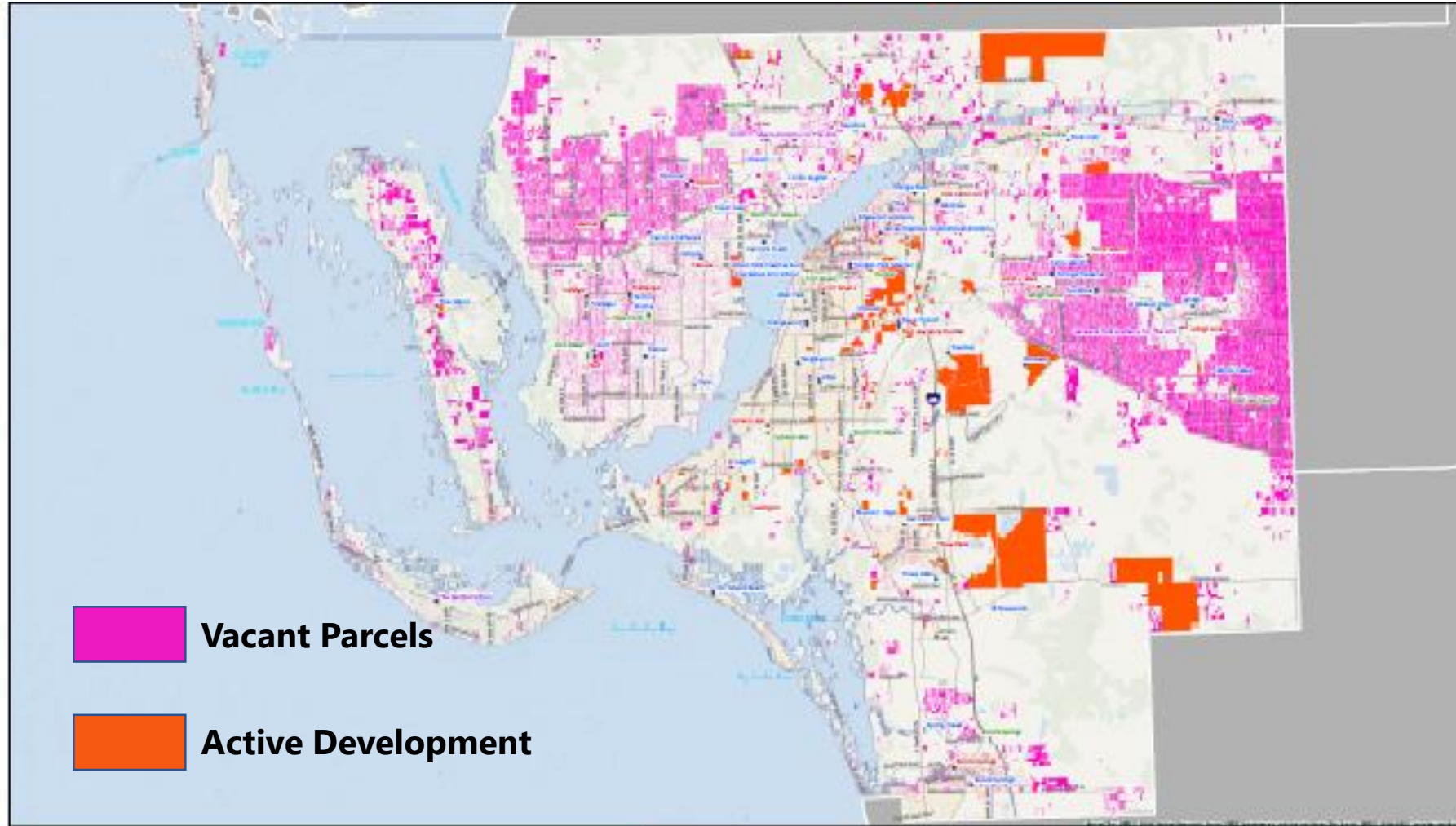
Table 2: Vacant Land in Cape Coral and Lehigh Acres

Location	Vacant Acres	Standard FLU Density	Possible Units
Cape Coral	12,743	4.4 du/ac	56,069
Lehigh Acres	26,734	6 du/ac	160,404
Total			216,473

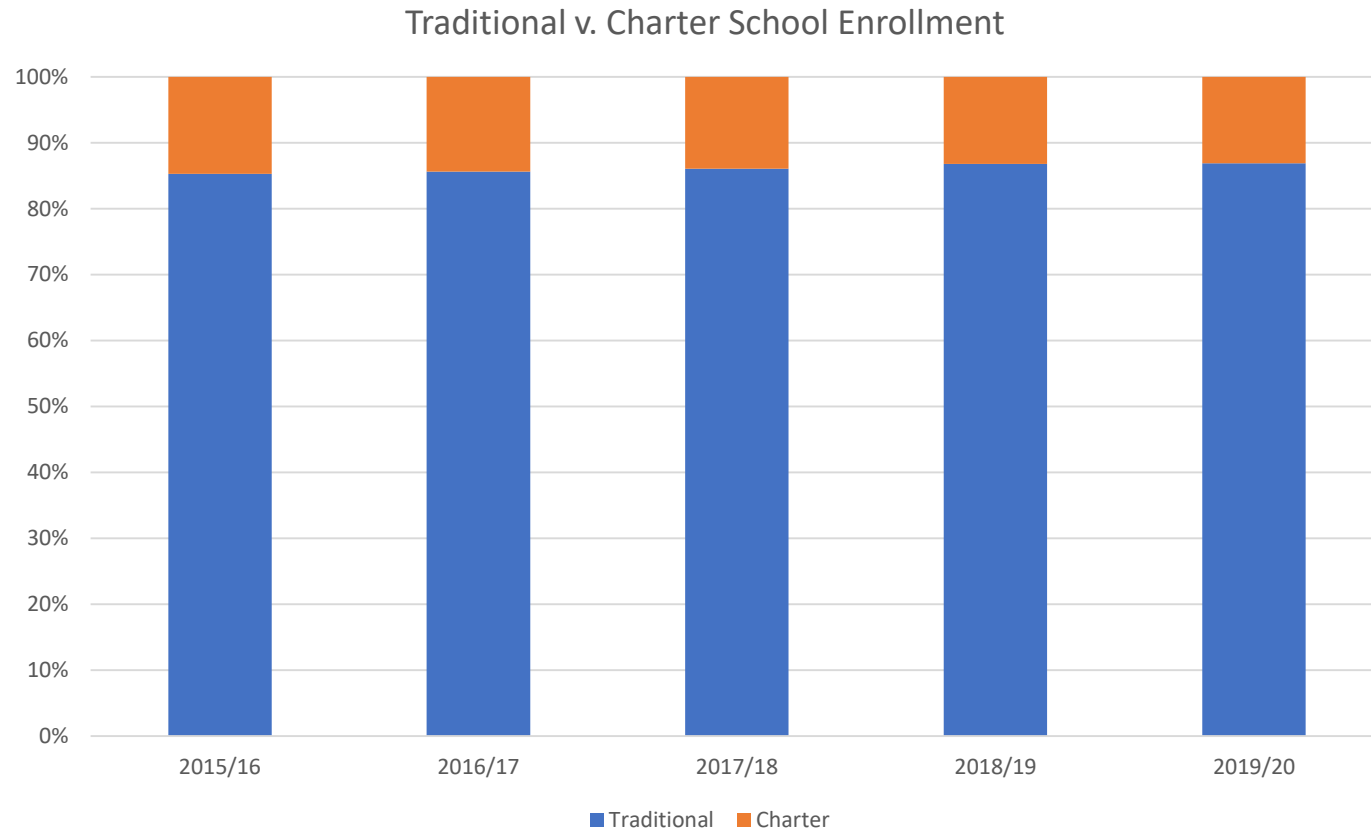


Vacant Parcels in:
 ← Cape Coral & Lehigh Acres →



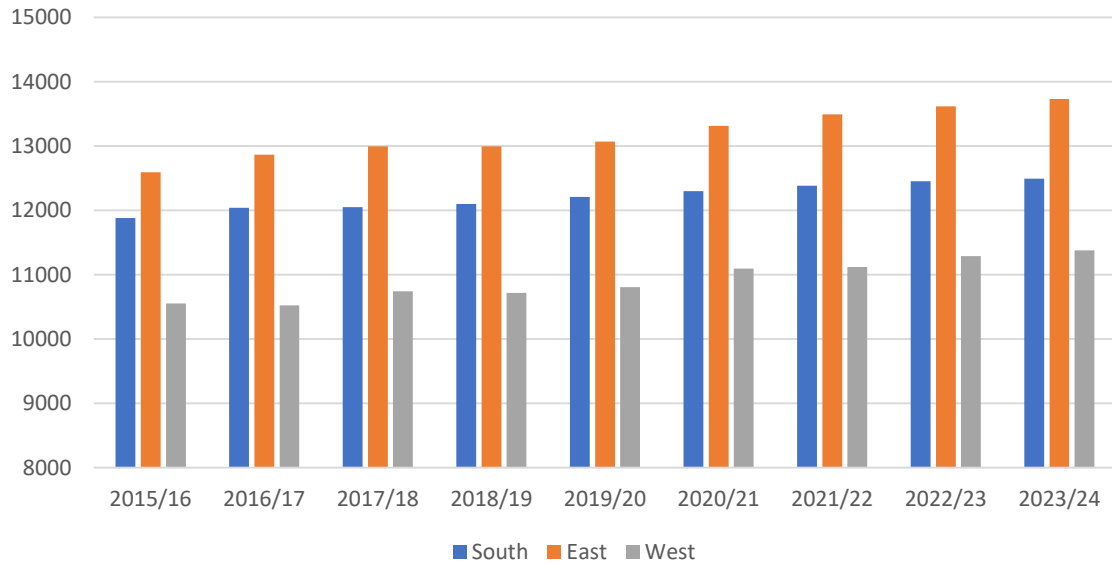


Enrollment – Traditional & Charter Schools

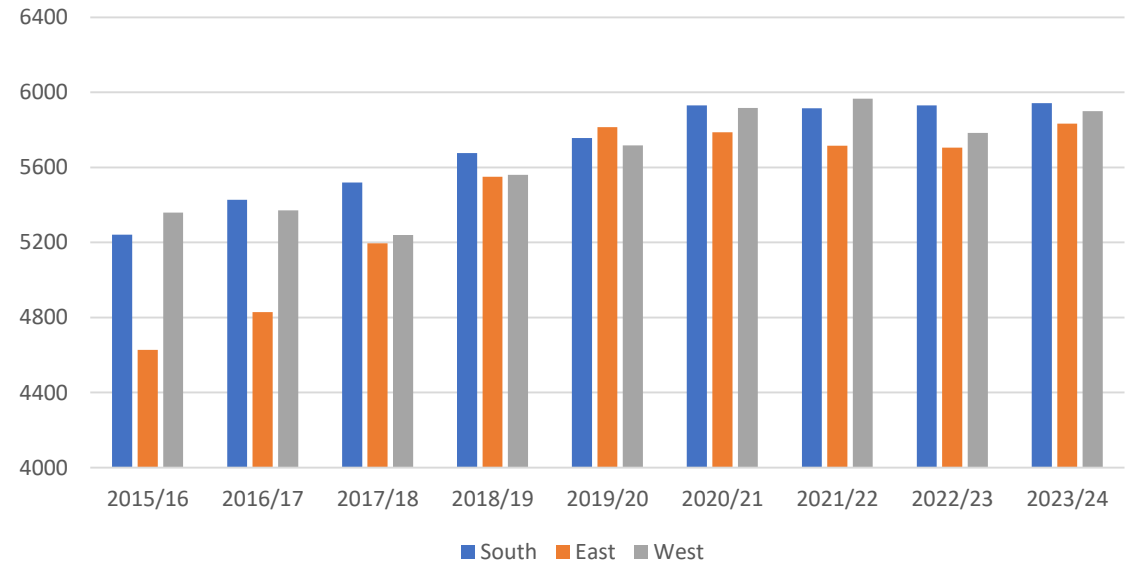


Enrollment & Projections – Elementary & Middle Schools

Traditional Elementary School Student Enrollment by Zone

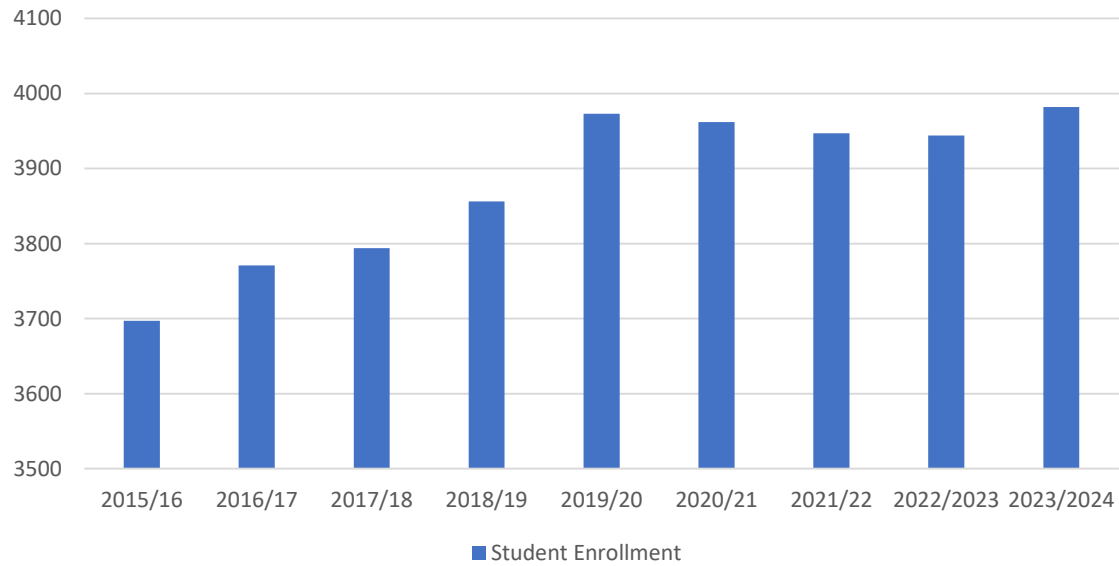


Traditional Middle School Student Enrollment by Zone

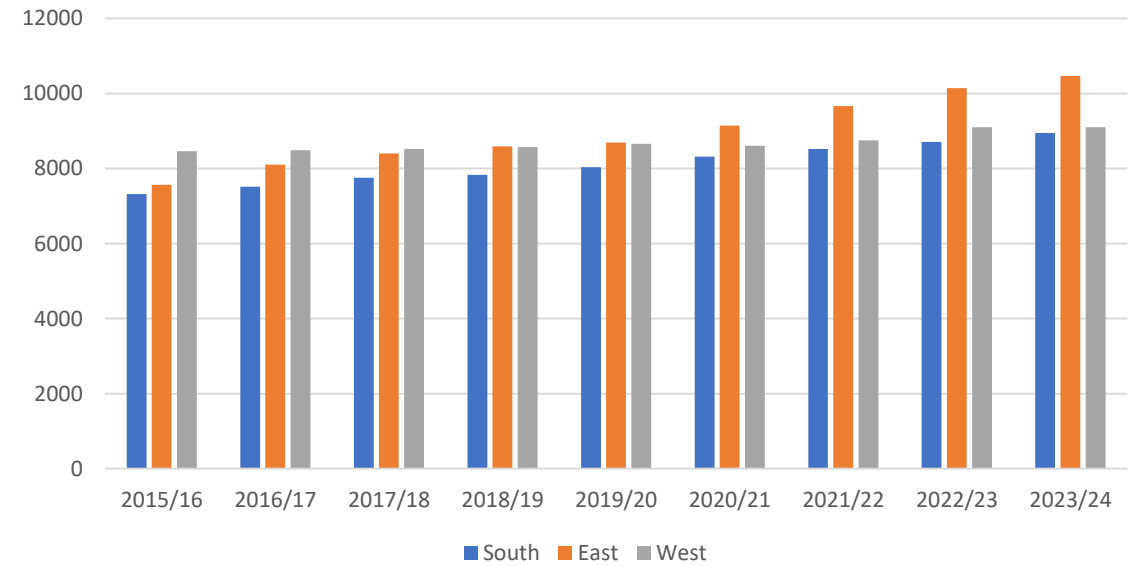


Enrollment & Projections – K-8 & High Schools

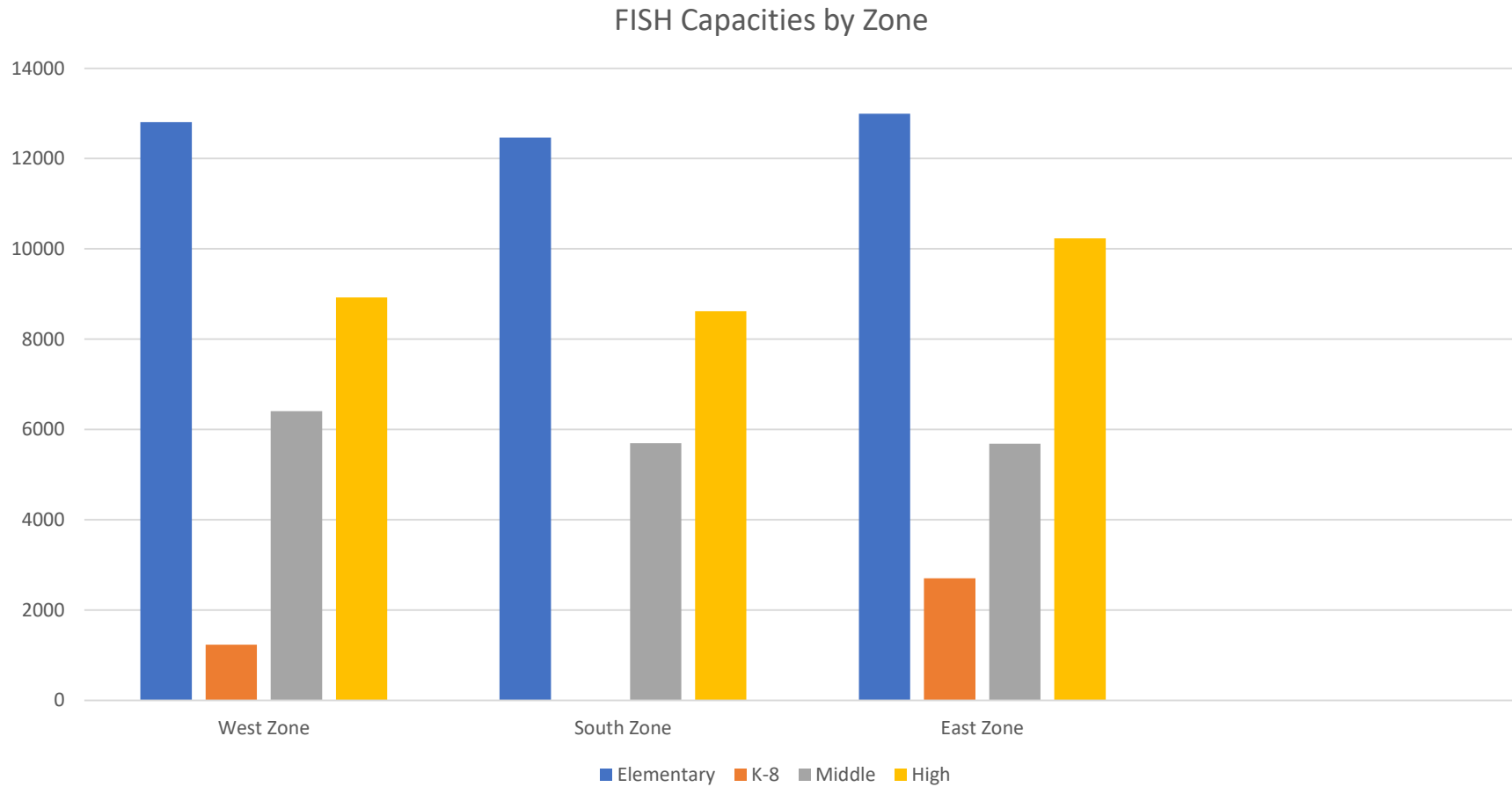
Traditional K-8 Schools Student Enrollment



Traditional High School Student Enrollment by Zone



School Capacities – FISH Capacity



Zone Capacity*

	WEST	SOUTH	EAST
Elementary	12,807	12,462	12,992
Middle	6,406	5,697	5,682
K-8	1,230	0	2,701
High	8,921	8618	10,233
<i>Total</i>	<i>29,364</i>	<i>26,777</i>	<i>31,608**</i>

* Additional information included in handouts

** Includes Gateway High School