

# Construction Services

Capital Project Update  
January 2021



**PERSONAL | PASSIONATE | PROGRESSIVE**

# ***CENTRALIZED ENERGY PLANT (CEP) & HVAC PROJECTS***

## **Cape Coral ES ~ HVAC Renovation**

**Start Date: 11/20/20**

**Substantial Completions: 08/08/21**

### **Building 2 - Winter Break Schedule**

- Installed three new air handling units.
- Installed new exhaust fans.
- Installed New chiller, pumps and chill water piping.
- Start new equipment 1/1 – 1/4/2021.

### **Building 15 - Winter Break Schedule**

- Installed VAV boxes.
- Demo existing HVAC equipment.
- New door opening to access the air handling unit (AHU) room from the exterior of building.
- Pour new pads for chiller yard.
- Install two new air handling units, new chiller, pumps, piping, and VAVs.
- Start new equipment 1/1 – 1/4/2021.

## **Fort Myers HS ~ HVAC Renovation**

**Start Date 08/20/20**

**Substantial Completion: 02/01/21**

- New cooling towers installed and piped.
- New ventilators installed soon.

**~ Tina Silcox, Construction Project Manager**

## ***NEW CONSTRUCTION PROJECTS ~ Gateway HS “MMM”***

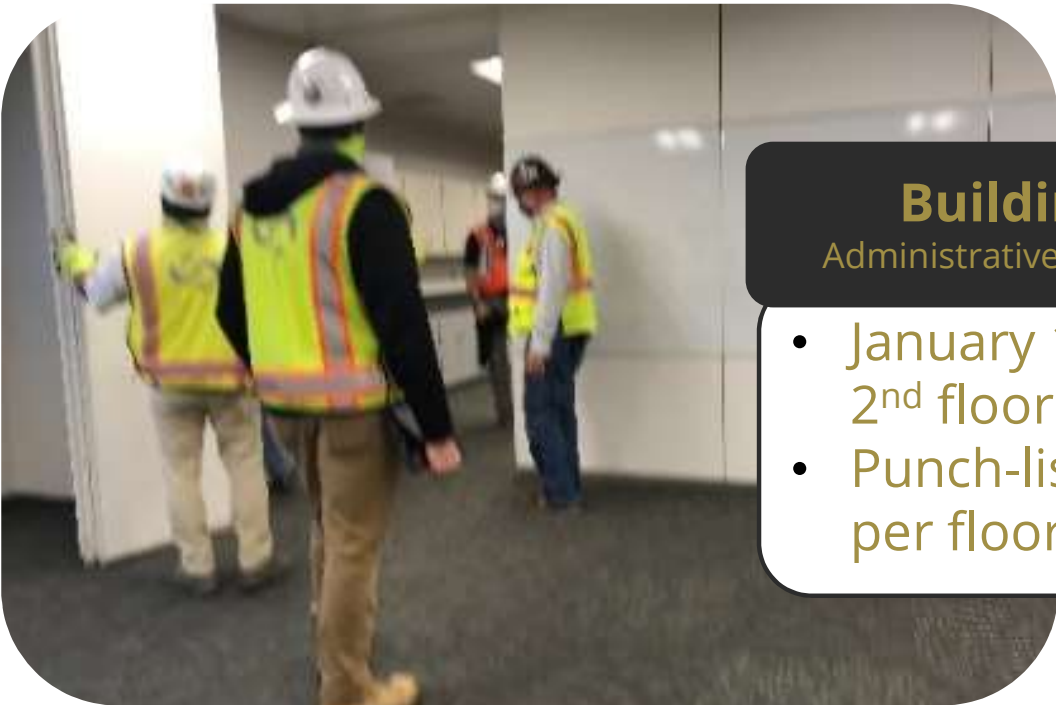


**RFQ Began:** 9/15/19  
**Architect Began:** 2/15/18  
**Building Official Began:** 10/18/18  
**Construction Mgr. Began:** 10/18/18  
**Substantial Completion:** 3/1/21

***Progress Aerial  
December 19, 2020***

~ Tina Silcox, Construction Project Manager

## NEW CONSTRUCTION PROJECTS ~ GATEWAY HS “MMM”



### Building “A”

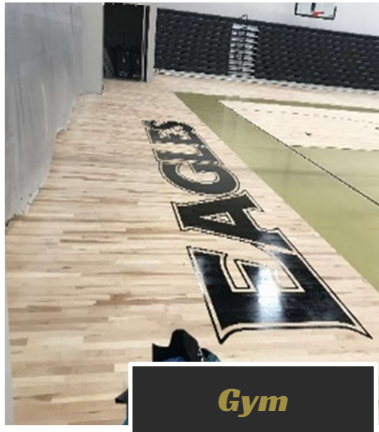
Administrative | Educational

- January 11<sup>th</sup> – Punch-list walk through began on 2<sup>nd</sup> floor.
- Punch-list walk through continues each week per floor.

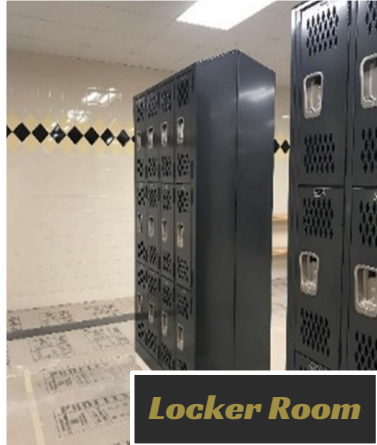
*Engineering Lab Folding Wall*

~ Tina Silcox, Construction Project Manager

# NEW CONSTRUCTION PROJECTS ~ GATEWAY HS “MMM”



**Gym**



**Locker Room**

## Building “B”

Cafeteria | Gym

### Gym/Locker Rooms

- Test and balance is 90% complete.
- Punch-list walk through will follow Building A.

### Cafeteria/Kitchen

- January 23<sup>rd</sup> – 30<sup>th</sup> – Kitchen equipment startup.



**Kitchen 1**



**Kitchen 2**

~ Tina Silcox, Construction Project Manager

# ***NEW CONSTRUCTION PROJECTS ~ GATEWAY HS “MMM”***



## **Building “C”**

Theater/Music/Art

- Finishing touches on bleachers.
- January 23<sup>rd</sup> – 30<sup>th</sup> – Installation of Kiln and Pottery Wheels.

## **Site Work**

Sports Fields/Concession/Dug Outs

- Sidewalks, paving, and sports fields are complete.
- Track is on-going.
- January 15<sup>th</sup> - Punch-list begins.



~ Tina Silcox, Construction Project Manager



# ***NEW CONSTRUCTION PROJECTS ~ LEHIGH ACRES MS “MM” (East Zone)***

## **Building “1”**

- Framing and drywall process.
- Mechanical rough-ins and cabling process.

**RFQ Began:** 11/4/18

**Architect Began:** 6/19/19

**Construction Mgr. Began:** 2/11/20

**Building Official Began:** 8/5/19

**Substantial Completion:** 7/15/21



## **Building “2”**

- Framing and drywall process.
- Mechanical rough-ins and cabling process.



## ***NEW CONSTRUCTION PROJECTS ~ LEHIGH ACRES MS “MM” (East Zone)***



### **Building “3”**

- First floor drywall complete.
- First floor painting and ceiling grid 90% complete.
- Second and third floors are in the drywall process.



### **Central Energy Plant “CEP”**

- January 14, 2021 – CEP has power and is turned on.



# RENOVATION PROJECTS ~ JAMES STEPHENS PRE-K

Front Entrance Canopy



Front Entrance Store Front



Pre-K Front Office/Lobby



RFQ Began: 11/4/18  
Architect Began: 1/30/20  
Construction Mgr. Began: 2/11/20  
Building Official Began: 5/7/20  
Substantial Completion: 12/31/20

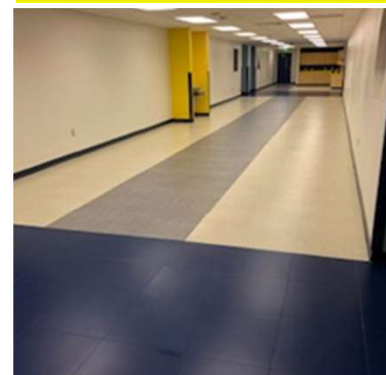
Bldg. 12 - Pre-K Classroom



Bldg. 11 - Flexible Space



Bldg. 12 - Flexible Space



~ Robriest Tyler, Construction Project Manager

# **REMODEL PROJECTS ~ FORT MYERS TECHNICAL COLLEGE**



**RFQ Began:** 10/4/20

**Architect Began:** TBD

**Building Official Began:** TBD

**Construction Began:** TBD

**Substantial Completion:** TBD

- Architect, Building Official, and Construction Manager have all been selected.
- Next step - Contract negotiations.

~Steve Hanna, Construction Project Manager

# REMODEL PROJECTS CONTINUED... G. WEAVER HIPPS ES

## ARCHITECT STATUS

- **November 13, 2020** - RFQ process began for an Architect.
- **December 15, 2020** - Staff reviewed and scored Architect's submitted documents.
- **February 9, 2021** - Board approval.

## BUILDING OFFICIAL STATUS

- **November 13, 2020** - RFQ process began for a Building Official.
- **December 17, 2020** - Staff reviewed and scored Building Official's submitted documents.
- **February 9, 2021** - Board approval.

## CONSTRUCTION MANAGER STATUS

- **November 13, 2020** - RFQ process began for a Construction Manager.
- **December 16, 2020** - Staff reviewed and scored Construction Manager's submitted documents.
- **February 9, 2021** - Board approval.

## Project Status

G. Weaver Hipps

RFQ Began: 11/13/20

Architect Began: TBD

Construction Began: TBD

Substantial Completion: TBD

Elementary School

~Steve Hanna, Construction Project Manager

# REMODEL PROJECTS CONTINUED... VETERANS PARK ACADEMY OF THE ARTS

## ARCHITECT STATUS

- **October 4, 2020** - RFQ process began for an Architect.
- **January 5, 2021** - Staff reviewed and scored Architect's submitted documents.
- **February 9, 2021** - Board approval.



**VPAA**

## BUILDING OFFICIAL STATUS

- **October 4, 2020** - RFQ process began for a Building Official.
- **January 7, 2020** - Staff reviewed and scored Building Official's submitted documents.
- **February 9, 2021** - Board approval.

## CONSTRUCTION MANAGER STATUS

- **October 4, 2020** - RFQ process began for a Construction Manager.
- **January 6, 2020** - Staff reviewed and scored Construction Manager's submitted documents.
- **February 9, 2021** - Board approval.

~Steve Hanna, Construction Project Manager

# ROOFING PROJECTS

## North Fort Myers HS

### Project Status

RFQ Duration: 9/15/19 - 1/14/20 – 4 months

Architect Began: 3/25/20

CM Began: 7/22/20

Substantial Completion: 3/8/21

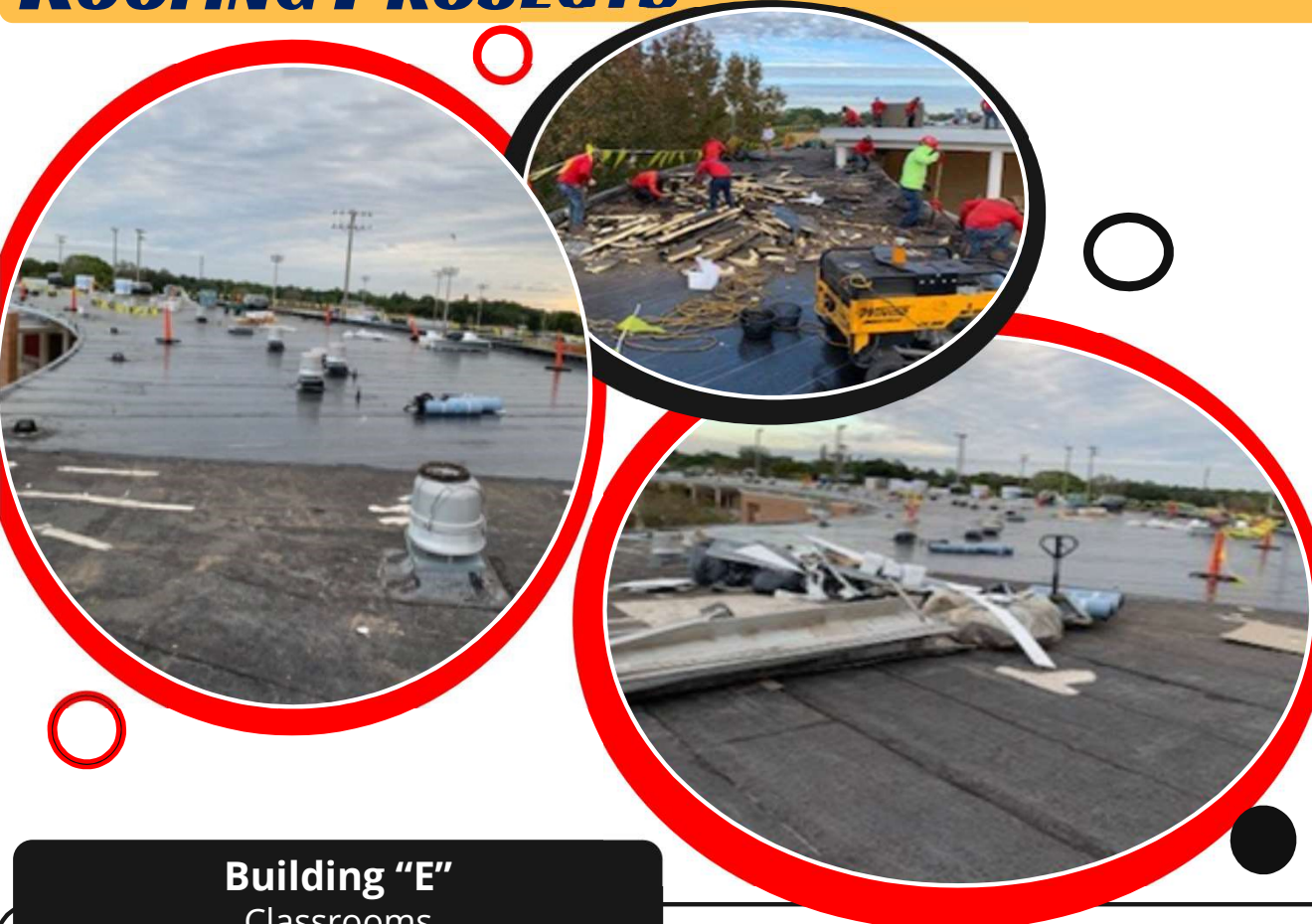
Project Complete: 80%

### Completion Breakdown:

Cafeteria | Auditorium | Band Room = 100%

Building E = 50%

Gym = 30%



### Building "E" Classrooms

- **50% Complete** – The first two plies have been applied.
- An additional two layers are needed to be applied.

**Matthew Burbach,**  
Construction Project Manager



# ROOFING PROJECTS CONTINUED...

## LEE COUNTY PUBLIC EDUCATION CENTER (LCPEC)



- Design documents are complete.
- Building Official's contract awaiting execution.

**RFQ Began:** 1/26/20

**Architect Began:** 9/16/20

**Building Official Began:** TBD

**Construction Began:** TBD

**Substantial Completion:** TBD

~ Steve Hanna, Construction Project Manager



# ROOFING PROJECTS CONTINUED...

## CYPRESS LAKE HIGH SCHOOL



- Winter break – 28,000 sq ft of roof was removed and dried in.
- Roof material manufacture shut down for break, causing a material delay.

**RFQ Began:** 10/13/19

**Architect Began:** 3/25/20

**Building Official Began:** 9/8/20

**Construction Began:** 9/8/20

**Substantial Completion:** 5/9/21

- Installing the second and third layers in the dried-in areas.



- Installing gutter and fascia mock up at the Center for the Arts.



## ***OTHER PROJECTS.... ORANGEWOOD ES TOWER REMOVAL***

**Deleon Road Closed**



**Tower Removal**



### **Project Status**

**RFQ Began:** N/A

**Architect Began:** N/A

**Building Official Began:** 6/23/20

**Construction Began:** 8/10/20

**Substantial Completion:** 1/4/21

**~ Rob Tyler, Construction Project Manager**