

Elementary Proximity Project

Equitable community choice for elementary schools in 2022-23



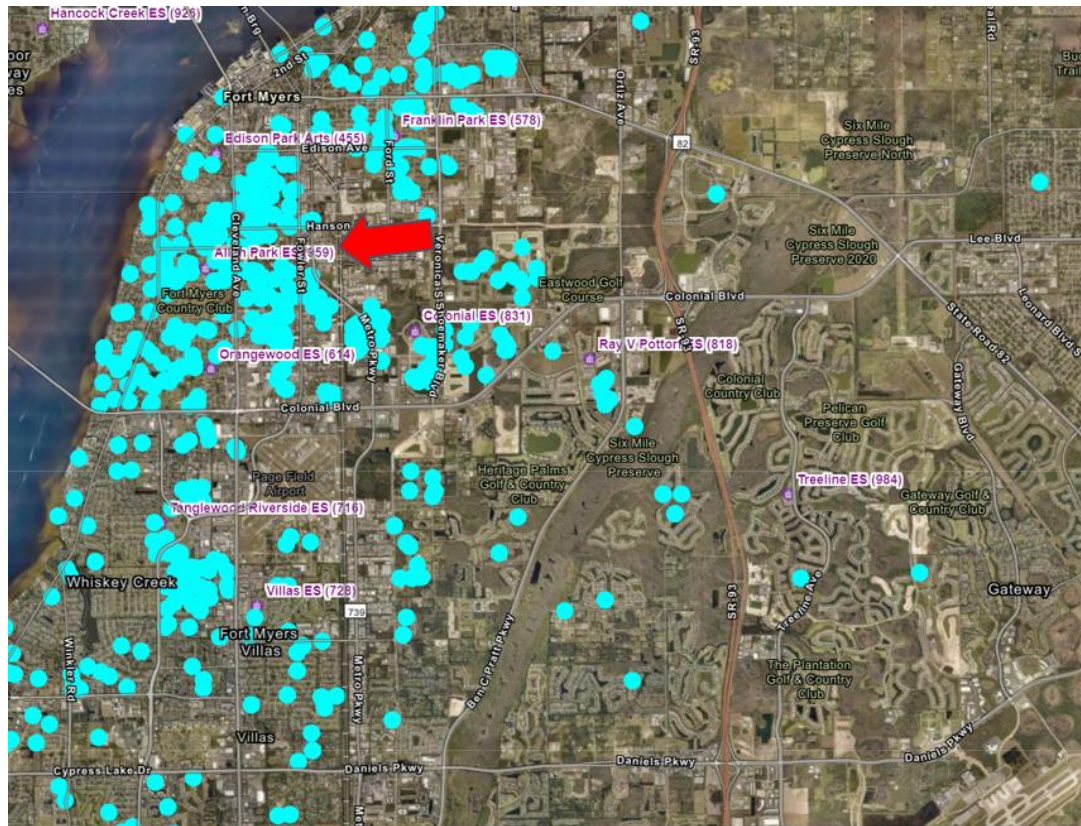
PERSONAL | PASSIONATE | PROGRESSIVE

Guiding Questions

- Why do we need a new elementary school student assignment plan (current issues)?
- What are the benefits of a new elementary school student assignment plan?
- How can the school district best collaborate with the community prior to implementation?



Current Issues: Community disconnect and transportation

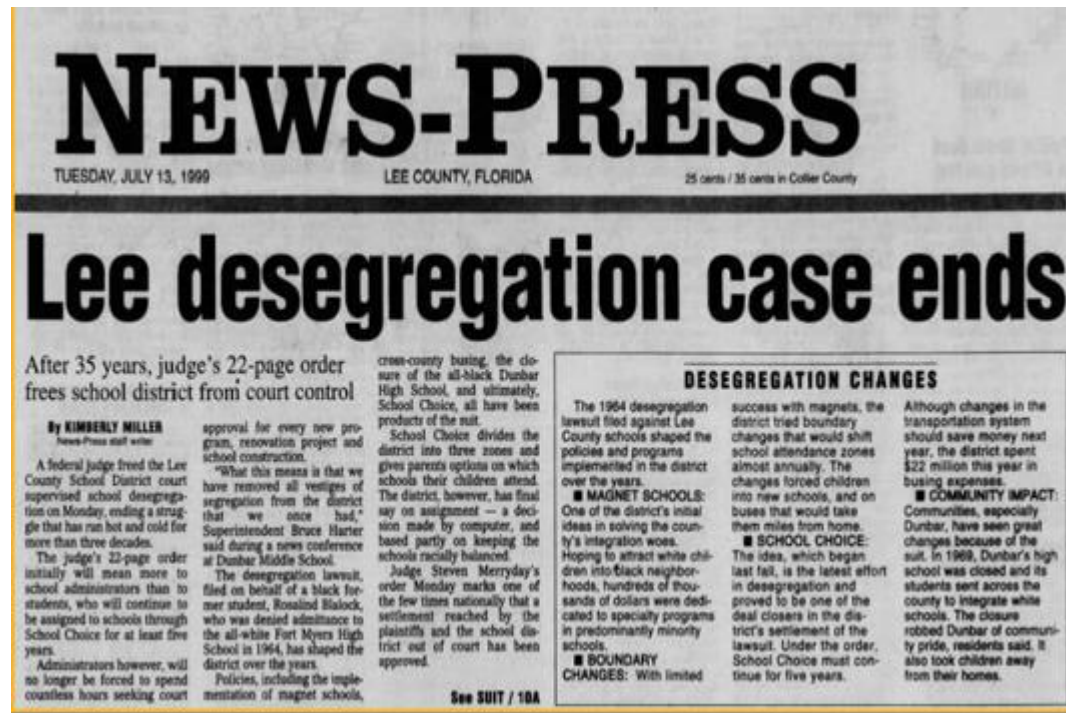


Route: 0191A:1678-B...PK:SM...EFF:08/10/18 CH
 Schools(s) Serviced: EDISON PARK CREATIVE & EXPRESSIVE ARTS

1	5:40 A.M.	REFLECTION ISLES BEFORE GATEHOUSE AM ONLY	3	6.77
2	6:02 A.M.	SIX MILE CYPRESS PKWY & SIX MILE CROSSING BLVD SPRINGS AT SIX MILE APARTMENTS - DOOR SIDE - AFTER INTERSECTION	1	6.45
3	6:12 A.M.	DANIELS PKWY & CORBEL CIR 200 FT PAST INTERSECTION MAKE STOP AFTER BLUE ADOPT A ROAD SIGN JUST WEST OF CORBEL	1	2.28
4	6:16 A.M.	BEACON ST & SUNRISE BLVD	2	1.95
5	6:21 A.M.	CENTER RD BETWEEN 3RD ST & 4TH ST	1	2.49
6	6:26 A.M.	CRYSTAL DR & FORDHAM ST	1	1.50
7	6:30 A.M.	PLANTATION RD & ARAGON WAY-DOOR SIDE-TUSCANY	2	4.44
8	6:39 A.M.	IDLEWILD ST & GWYNNE AVE	1	4.03
9	6:46 A.M.	SIX MILE CYPRESS PKWY & VIA COLOMBA CIR	1	0.12
10	6:47 A.M.	BERNWOOD PLACE DR @ BERNWOOD PLACE LN SOUTH OF ENTRANCE	1	2.34
11	6:53 A.M.	PROVINCE PARK BLVD BEFORE GATE HOUSE OFF WINKLER EXT	2	2.74
12	6:58 A.M.	3950 WINKLER EXT-REDEEMER EARLY LEARNIN CENT USE PARKING LOT TO TURN AROUND. GO STRAIGHT AT STOP SIGN CIRCLE BUILDING AND DROP OFF DOOR SIDE.	0	2.85
13	7:02 A.M.	EXECUTIVE CIR & CORTINA CIR-DOOR SIDE	2	1.00
14	7:05 A.M.	3739 METRO PKWY - WESTWOOD APTS AFTER ENTRANCE DOOR SIDE - NORTH BOUND - NO STUDENTS SHOULD CROSS METRO PKWY	4	2.08
15	7:10 A.M.	3746 METRO PKWY-WESTCHASE APTS AFTER ENTRANCE	1	2.68
16	7:16 A.M.	CANAL ST & HIGHLAND AVE	1	0.66
17	7:18 A.M.	FORD ST & DORA ST	7	2.93
	7:25 A.M.	EDISON PARK CREATIVE & EXPRESSIVE ARTS->0191: EDISON PARK CREATIVE & EXPRESSIVE ARTS		
	7:27 A.M.	ARRIVE AT		
17 Stop(s) 105 Minute(s) 31 Student(s) 47.31 Mile(s)				



Current Issues: The promise of *Blalock* and equity



School Year	# of intensely segregated elementary schools (90% non-White)	# of at-risk intensely segregated elementary schools (85% non-White)
2018-2019	5 <ul style="list-style-type: none"> Bonita Springs Colonial Franklin Park Manatee Tice 	4 <ul style="list-style-type: none"> James Stephens Orange River Ray V. Pottorf Spring Creek Tice

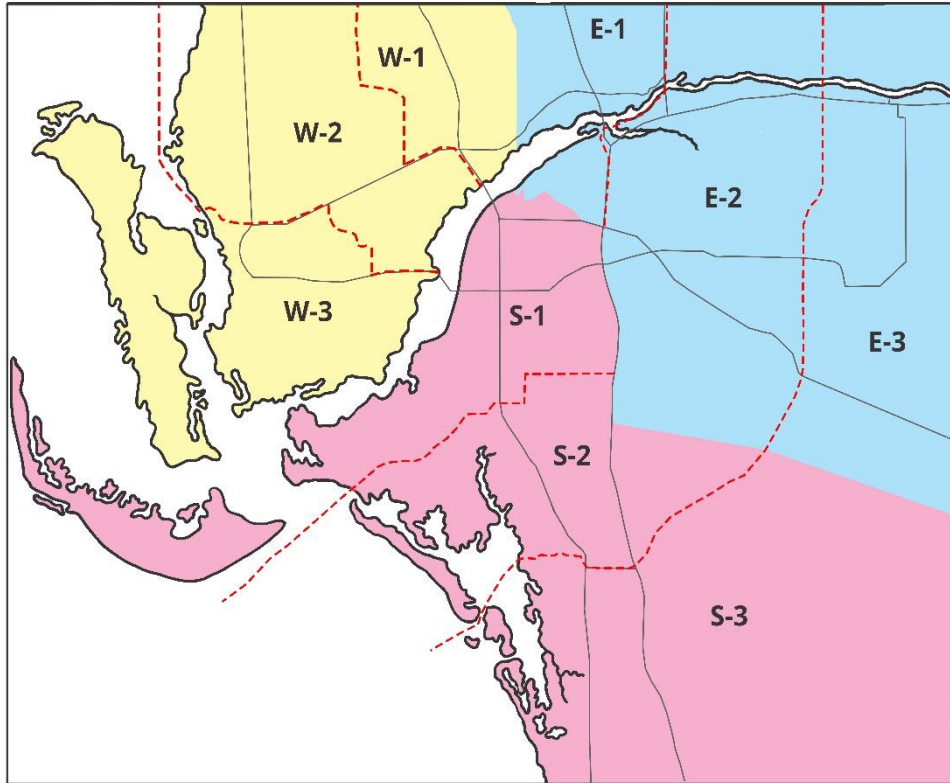
New Plan

- Scheduled to go into effect for the 2022-23 school year for elementary schools.
- The purpose of the plan is to offer **stronger community choices** for our students prioritizing **equity and inclusion** by creating smaller zones that:
 - Strengthen diversity
 - Build community schools
 - Improve transportation efficiency
 - Maintain choice

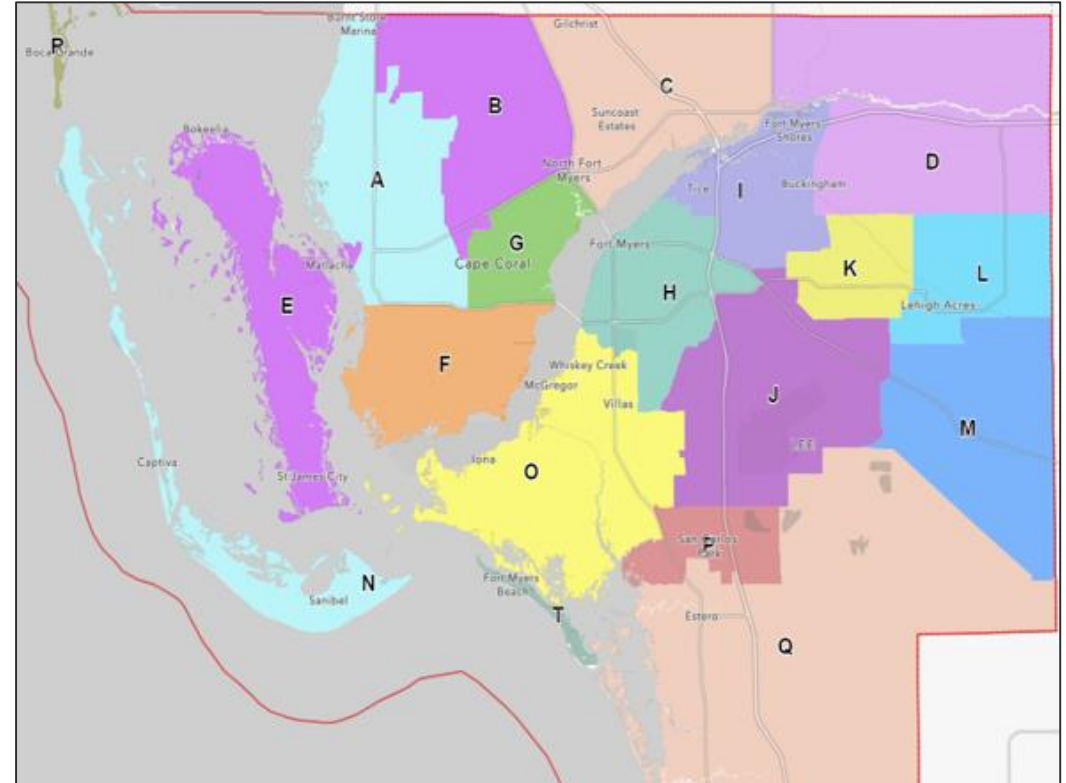


Elementary Proximity Plan

Current



New Plan



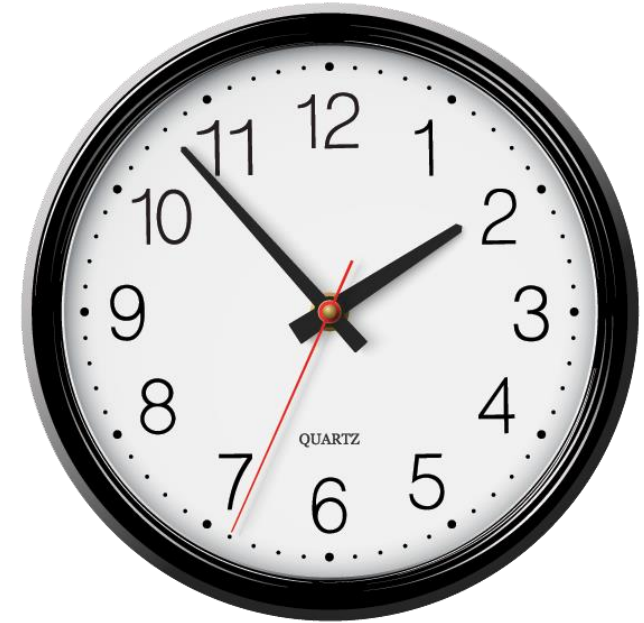
The Process

- Davis Demographics
 - Data-driven decision making using GIS
- Community / Residential / Student Data
- New zone student pool data
- Policy and Programs
 - Academic programming
 - Grandfathering
 - Lottery mechanisms



Project Timeline

- **January / February 2021**
 - 4 draft plan available for review
- **March / April 2021**
 - Final boundary plan(s) presented to public
- **July 2021**
 - Final boundary plan/policies presented to School Board
- **Fall 2022-2023**
 - Implement new student assignment plan for elementary schools



Associated Improvements

- Better system for our community and future
- Connection between parents and schools
- Strengthening diversity at the elementary level
- Funding for schools with transportation savings



We Want Your Feedback!



Please visit www.leeschools.net/ProximityPlan for
Draft Maps
Interactive Web App
Public Feedback Form

Questions / comments / meeting requests
Email: ProximityPlan@leeschools.net



Comments

